



Corinthian Yacht Club of Edmonds Mad Dash

Notice of Race

Dates: second Saturday/Sunday of June

Register: online by Thursday before the race. CYCE members: no fee. Non-members: \$10.

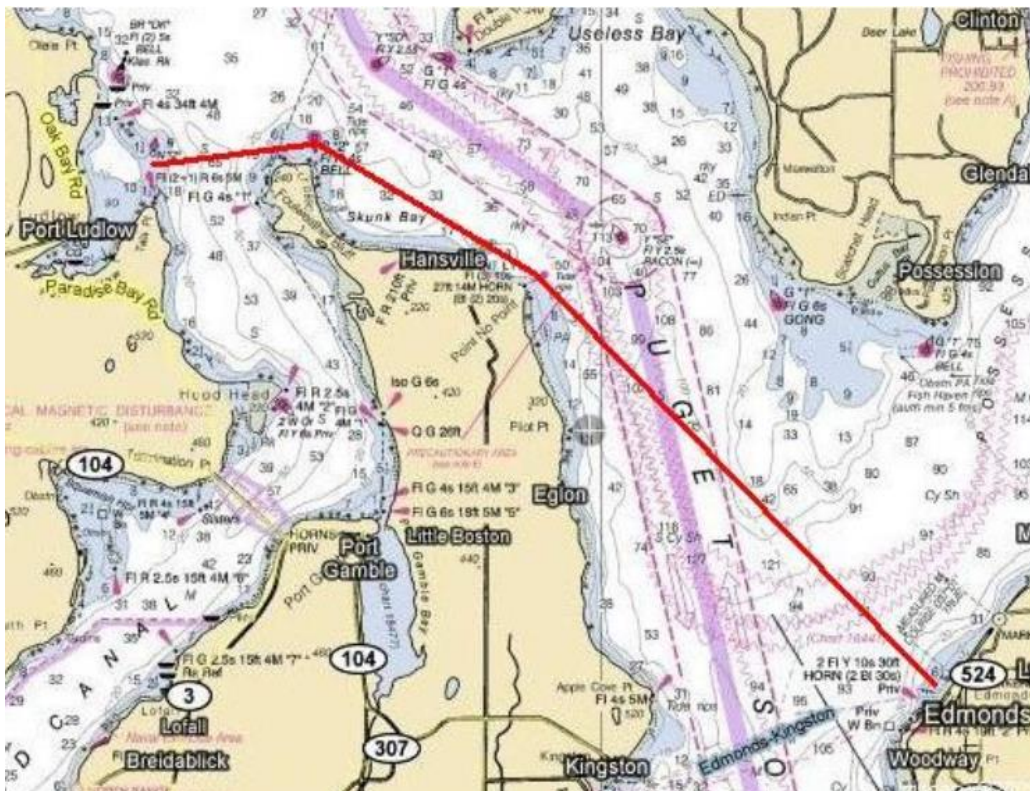
All skippers arrange their own moorage with the Marina at Port Ludlow. Call 360-437-0513 and mention CYCE Mad Dash, or use their online system at <https://portludlowresort.com/request-a-slip/>.

The CYCE Mad Dash is a two day, 13.7 mile, short-handed, no flying sails, reverse staggered start destination race to Port Ludlow and back, with a social potluck on Saturday night. It is a CYCE tradition to appeal to both racers and cruisers. The first start each day is at 11 am. The reverse staggered starts are low stress and, theoretically, all boats should finish at the same time, so it's easy to see how you're doing if you're interested in that sort of thing.

On Saturday, racers do a reverse start (slowest rated boats first) at an assigned starting time from a temporary starting line north of the Edmonds ferry dock to a mark at Port Ludlow. On Sunday, racers start at the same time as the previous day, sail back to the temporary starting line at Edmonds.

We allow up to two adults to handle the boat. Self-steering devices are allowed. Children and additional adult passengers are ok if they do not aid in the sailing of the vessel mentally or physically. Please check these additional passengers in with the Race Committee before starting.

Cocktail hour starts after the finish, on the docks or land. The potluck dinner will start at 6 pm up at the shelter near the port office. CYCE provides hot dogs and hamburgers, condiments and plates, etc. Please





Corinthian Yacht Club of Edmonds

Mad Dash

bring an appetizer, side dish or dessert to share, and your own beverages. The awards ceremony for the first day awards and last year's second day awards starts at 7 pm.

Sailing Instructions

1. Rules

This race is a single or double handed race. Flying sails are not allowed. Yachts are allowed to carry additional inactive passengers subject to prior review and acceptance by the Race Committee.

All races are governed by the current International Sailing Federation (ISAF) Racing Rules of Sailing (RRS), including US SAILING Prescriptions, except as amended by these General Sailing Instructions and Special Sailing Instructions. The general race instructions shall apply in the event of a conflict.

The race committee will monitor VHF Channel 72.

2. Course

The start of the race on Saturday is north of the Edmonds ferry dock between the committee boat and a temporary start pin, which is also the finish pin on Sunday. The finish location on Saturday is between Red "2" (pilings) SE of Colvos Rocks and the committee boat. On Sunday, the start is between the piles Red "2" and the committee boat, and the finish pin is a temporary mark north of the Edmonds ferry dock (the start pin used Saturday.) The course distance is approximately 13.7nm.

3. Start Sequence

Boats shall start in reverse order (slower boats starting first) based on PHRF time on distance ratings, which will be assigned by the day before the race. The official time is GPS time.

The starting sequence is as follows, with a horn sounded at each step:

- First warning 10 minutes prior to first start.
- Second warning 5 minutes prior to first start.
- Preparatory signal 4 minutes prior to first start.
- One minute signal 1 minutes prior to first start.
- First start 0 minutes
- Each subsequent start assigned based the rating of each boat.

A double sound signal is used as the over early signal.

4. Start delays

A double sound signal and Code flag "AP" is used for a start delay.

If there is a delay, the race committee will delay 20 minutes, then begin the start sequence. All yachts shall add 30 minutes to their assigned start time.

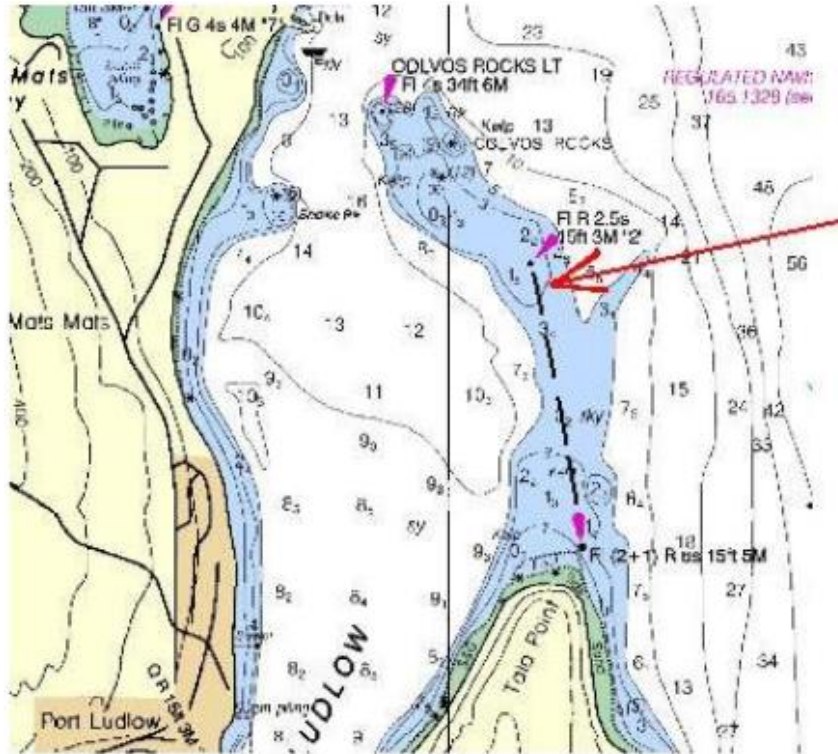
For additional delays, the race committee will delay for one hour, with the start sequence begun at 10 minutes prior to the hour. All yachts shall add on additional hour to their assigned start time.



Corinthian Yacht Club of Edmonds Mad Dash

5. Finish Times

If the committee boat is not on station at the finish, pass within two boat lengths of the finish pin (Red "2" on Saturday, temporary mark north of the Edmonds ferry dock on Sunday.) Take your finish time when your boat is directly between the Tala Point mark and Red "2" on Saturday, and when the finish pin is abeam at 180 degrees on Sunday. Submit your time, and the boat ahead and boat behind you, to the race committee as soon as possible.



6. Time Limit

The time limit is at 5 PM each day. There is no shortened course.