

CYCE Notice of Race 2017 Mad Dash

A short handed destination race. Up to two adults handling the boat.

Additional children are OK. Pot luck after racing.

Date - June 10 & 11

Entry Fee: CYCE members no fee, non-members \$10

Entry registration required by Thursday before race day.

Course – Edmonds-Port Ludlow Saturday. Port Ludlow-Edmonds Sunday. 13.7 nm each way

Reverse starting order, Time on distance handicap scoring

This is a NO FLYING SAILS EVENT

Self steering devices are allowed.

Starting times will be e-mailed to registered entries no later than Friday prior to the first start.

Official time is GPS time

Registration Information:

Boat name: _____ Boat Type: _____

NFS PHRF rating _____ Owner/Skipper _____

E-mail _____ Phone: _____

Return to: Andrew Olseene 13540 23rd Ave NE Seattle, WA 98125

E-mail: andrew.olseene@gmail.com

Cell 425-681-6577



Race Instructions Mad Dash

CYCE General race instructions shall apply in the event of a conflict.

Course distance is 13.7 nm

NO FLYING SAILS

Single or double handed.

Boats shall start in reverse order (slower boats starting first) based on "PHRF time on distance" handicap rating.

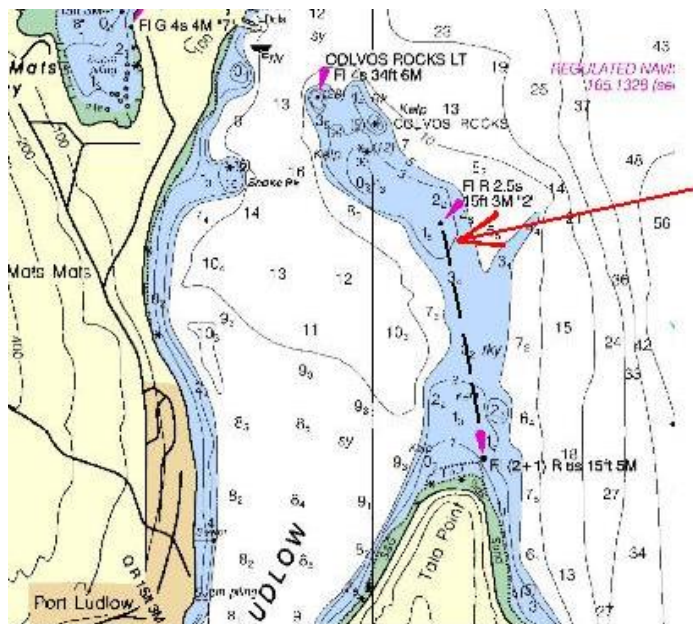
Starting sequence:	1 st Warning	10 min prior to first start
	2 nd Warning	5 min prior to first start
	Preparatory	4 min prior to first start
	One Minute	1 min prior to first start
	Start	First start

A sound signal shall be sounded for each subsequent start.

Over Early Signal – double sound signal

Delay – Code flag "AP" and two sound signals. In the event of a delay, race committee will delay 20 minutes, and begin start sequence again. ALL competitors shall adjust their start time by 30 minutes. In the event that another delay is begun, first start shall be on the next full hour, with the start sequence begun at 10 minutes prior to the hour. Adjust your start time by one full hour.

Saturday First Start @ 11:00 AM Time limit is 5 PM
 Start Area – North of the Ferry Dock between RC and temporary start mark.
 Proceed to finish area between Red "2" (pilings) lying to the SE of Colvos Rocks and RC boat. In the event that RC is not on station, take your finish time when your boat is directly between Tala Point Mark and Red "2", and pass within two boat lengths from Red "2". Submit your time, with the boat ahead and boat behind, to the RC at Port Ludlow ASAP.



Sunday

First Start @ 11:00 AM Time limit is 5 pm.

Start between RC and Red "2" Pilings located to the SE of Colvos Rocks. Proceed to finish area north of the Edmonds ferry dock, between RC and temporary mark. In the event that RC is not on station, take your time when due NORTH of and within two boat lengths from temporary finish mark. Report your time, with the boat ahead and boat behind, to the Race Committee ASAP.

GPS time shall be used for all starts & finishes.

If in question, contact the race committee boat. RC will monitor VHF Ch 72.

Participants must confirm reservations at Port Ludlow prior to race. (360)437-0513.

Mention CYCE Mad Dash

Entries may be allowed to carry additional "INACTIVE" passengers subject to prior review & acceptance by RC.

Pot luck gathering after the race on Saturday. Bring your favorite dish. CYCE will provide hamburgers.